

RIDEWELL SUSPENSIONS

The Engineered Suspension Company

RDS-209

Tandem Air Drive/Steer Suspension

Owner's Manual



www.ridewellcorp.com

P.O. Box 4586 • Springfield, MO 65808 • 417.833.4565 • 417.833.4560 (fax)



Suspension Identification:

Ridewell's **RDS-209** suspension is identified by a metal tag attached to the outside of the drivers side beam just behind the trunnion connection, that indicates part number, revision level, and serial number.

Parts:

For optimum suspension performance, order only Ridewell parts. Replacement parts for **RDS-209** are shown on pages 8-15 of this manual.

Sales, Service & Warranty:

If you need assistance regarding this product, please contact us and we will be glad to help you.

Mailing Address

Ridewell Corporation
P.O. Box 4586
Springfield, MO 65808

Shipping Address

Ridewell Corporation
3715 East Farm Rd. 94
Springfield, MO 65803

Phones, Fax, E-mail

800.641.4122, 417.833.4565
417.833.4560 (fax)
info@ridewellcorp.com



Contents

Basic Operation.....	3
Features.....	3
How the Suspension Works.....	4
Installation Check List.....	4
Operational Inspection.....	5
Basic Troubleshooting.....	5
Preventative Maintenance Schedule.....	6
Parts List.....	7
Service Parts.....	9
Parts Illustrations.....	8-15
Warranty.....	16

Basic Operation

When properly maintained and operated within design limits, Ridewell's **RDS-209** Tandem Air Drive/Steer Suspension will provide many years of trouble-free service.

The **RDS-209** provides the refuse and heavy duty truck industries with a suspension that offers the capacity of a tandem drive axle with the maneuverability of a single drive axle. The weight distribution is automatic (no driver control required or allowed), distributing approximately 60% of the load to the drive axle and 40% to the self-steer tag axle. The **RDS-209** is a 46,000 lb. capacity suspension offering a 1500-2000 pound weight savings over traditional tandem drive axles.

Features

- Reduced turning radius of vehicle
- Reduced tire scrub when turning
- Increased tire life at all wheel positions
- Lower vehicle acquisition and operation costs
- 1500-2000 pound weight savings over traditional tandem drive axles
- Drive & tag axles with excellent articulation
- Shock kit standard
- Dampened & equalized inputs for both axles via a single air spring per side



How the Suspension Works

The **RDS-209** 60/40 Tandem Air Drive/Steer Suspension is a 46,000 lb. capacity, road-friendly suspension for longer vehicle and tire life. It is a single-point tandem suspension with an air-equalizing walking beam. The system's parallelogram design distributes approximately a 60/40 load distribution between the drive axle and the non-drive self-steering tag axle, while maintaining proper drive line and caster angles.

When the vehicle is backing, the steer axle is equipped with a steer locking mechanism which will forceably hold the axle to a centered position. The steer centering is pneumatically operated via a solenoid valve upon a reverse signal input.

Installation Checklist

1. Check that the steer locks straighten the wheels when the vehicle is placed in reverse.
2. Check the toe of the tag axle. Toe-in should be $1/32'' \pm 1/32''$.
3. Check that all fasteners, including wheel nuts, are tightened to the proper torque values.
4. Check that brakes and slack adjusters are properly adjusted and that wheels rotate freely.
5. Check hubs for proper oil levels.
6. Check that a caster angle of $5^\circ \pm 1^\circ$ is obtained at ride height.
7. Check that leveling valves are properly orientated. (See **Figure 1**).

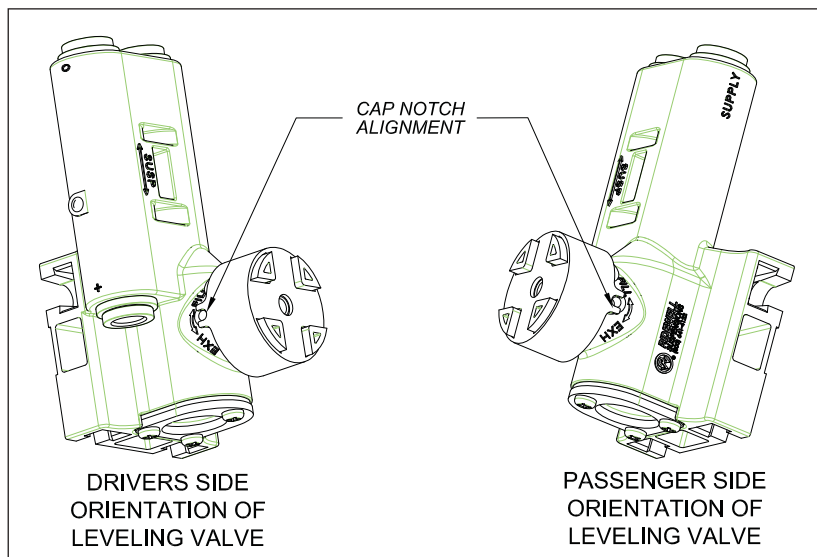


Figure 1



Operational Inspection

1. Inspect all fasteners at the pedestal clamp and pedestal-to-frame connections. Refer to the torque chart for proper torque requirements.
2. Inspect air springs and leveling valves for proper ride height and orientation. Air spring height should measure 7" from bead plate to bead plate. To adjust ride height (spring height) adjust the position of item 9 from page 15.
3. Inspect shocks and shock attachment points.
4. Inspect drive axle end bushings and axle attachments.
5. Inspect the three steer axle lever arms (2 lower & 1 upper) pivot points and bushings.
6. Inspect steering axle, tie rod, wheel ends, & brakes.

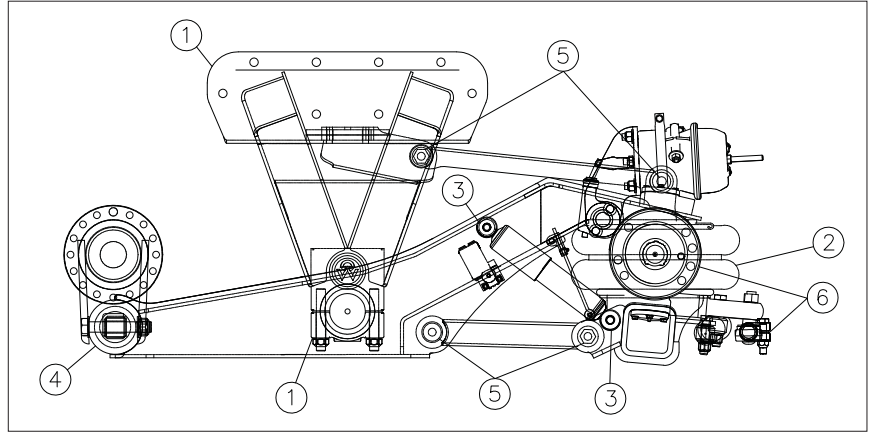


Figure 2

Basic Troubleshooting

1. Vehicle pulls to left or right - check the following:
 - a. Tire pressure
 - b. All suspension bushings
2. Vehicle has excessive sway - check the following:
 - a. Torque arm bushings
 - b. Center bushing
3. Vehicle has axle walk or hop - check the following:
 - a. Torque beam bushings
 - b. Center bushings
4. Mounting height has changed - check the following:
 - a. Air springs
 - b. Leveling valves position & orientation (see **Figure 1**, page 4)
 - c. All suspension bushings
5. Vehicle drive axle slipping (loosing traction)
 - a. If equipped, lock differential
 - b. Ensure automatic traction control is functioning



Preventative Maintenance Schedule

To keep your Ridewell suspension in optimum working order, we recommend the following maintenance:

Service Intervals					
	1,000 miles	First 6,000 miles of operation	12,000 miles	36,000 miles	100,000 miles
Steering Mechanism					
Tie Rod/Tie Rod Ends			I,L		
King Pins and Bushings				L	
Thrust Bearings				L	
Steering Knuckle Vertical End Play Inspection			I		
Upper and Lower King Pin Bushings for Wear			I		
Steering Stabilizer			I		
Draw Key Nuts		T		T	
Wheels & Brakes					
Wheel Lubricant	I				R
Wheel Endplay					
Brake Cam			L		
Slack Adjuster			L		
Brake Lining					
Brake Drum					
Brake Function					
Wheel Nuts					
Suspension					
Bushings	I				
Air springs	I				
Structure	I				
Fastener Torque		T		T	

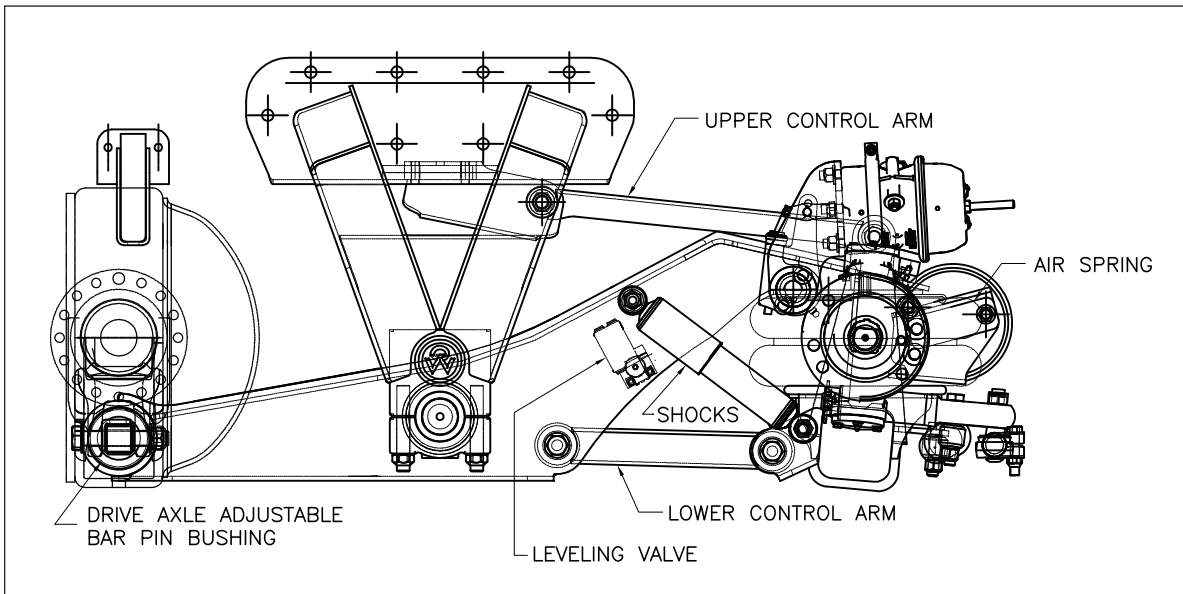
I=Inspect, L=Lubricate, T=Tighten, R=Replace

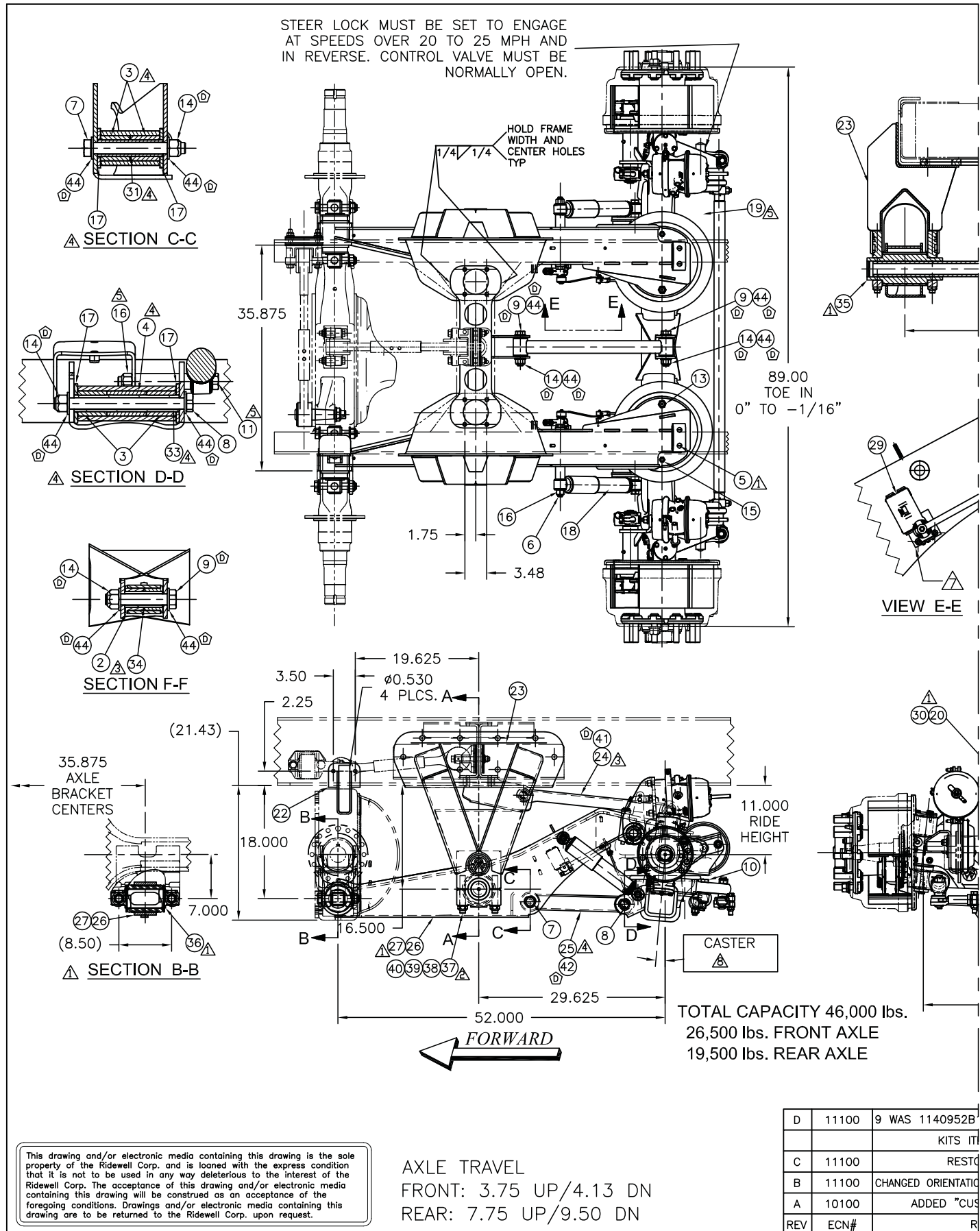
Lubricant Recommendations	
Tie Rod End, King Pin, Thrust Bearing, Brake Cam, Slack Adjuster	NLGI 1 or 2
Wheel Lubricant	API-GL-5

Note: The above intervals are minimum requirements and more frequent intervals are recommended for severe applications.



2090003 Service Parts 6/22/2012		
DESCRIPTION	PART #	QUANTITY PER SUSPENSION
AIR SPRING	1002B14385G	2
SHOCKS	1270563B003	2
LEVELING VALVE	6300CCAB03	2
UPPER TORQUE ARM BUSHING REPLACEMENT KIT	6040115	1
LOWER TORQUE ARM BUSHING REPLACEMENT KIT	6040116	2
DRIVE AXLE ADJUSTABLE BAR PIN BUSHING	1117653B001	2
PEDESTAL CENTER BUSHING	1117558B000	2
KING PIN REPLACEMENT KIT	1660324	2
BUSHING REPLACEMENT KIT FOR ENTIRE SUSPENSION	6040117	1
LOWER CONTROL ARM REPAIR KIT	6040120	2

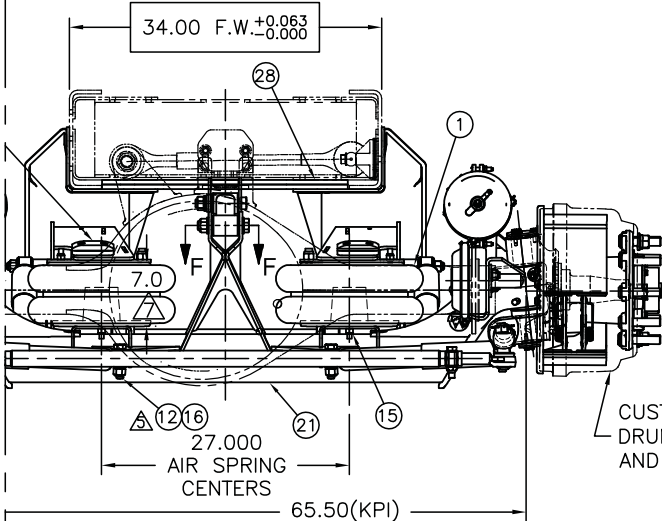
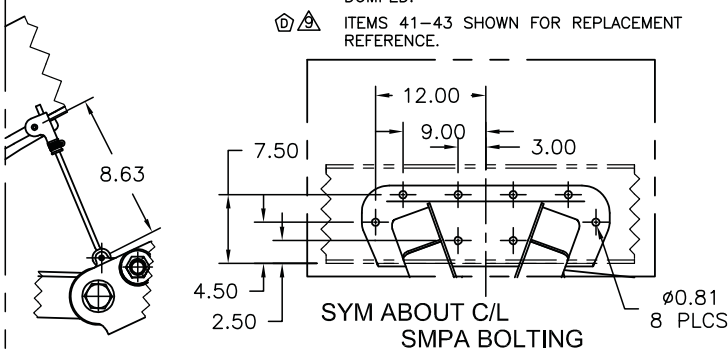
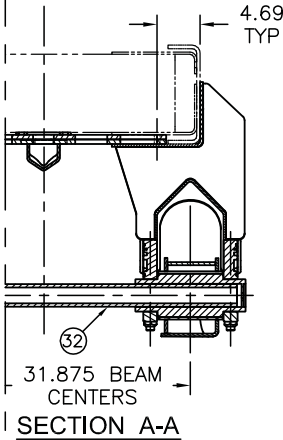






NOTES:

- △ - ITEMS 5, 20, 30, 35, & 36 ARE PART OF EQUALIZER ASSEMBLIES (ITEMS 26 & 27) AND ARE LISTED FOR REPLACEMENT REFERENCE ONLY.
- △ - FASTENERS AND COMPRESSION CAP (ITEMS 37, 38, 39, AND 40) ARE PART OF THE PEDESTAL ASSEMBLY (ITEM 23) AND ARE LISTED FOR REPLACEMENT REFERENCE ONLY.
- △ - ITEMS 2 & 34 ARE PART OF UPPER T'ROD (ITEM 24) AND ARE LISTED FOR REPLACEMENT REFERENCE ONLY.
- △ - ITEMS 3, 4, 31 & 33 ARE PART OF LOWER T'BEAM (ITEM 25) AND ARE LISTED FOR REPLACEMENT REFERENCE ONLY.
- △ - ITEMS 10, 11, 12, 16, (4pcs) & 19 ARE PART OF AXLE ASSEMBLY (ITEM 21) AND ARE LISTED FOR REPLACEMENT REFERENCE ONLY.
- △ - AFTER SUSPENSION HAS BEEN IN OPERATION FOR 6,000 MILES ALL FASTENERS SHOULD BE RETIGHTENED TO THE SPECIFIED TORQUE. REPEAT EVERY 50,000 MILES.
- △ - NOTCH ON DRIVE BEARING CAP (ITEM 29) MUST BE ON SAME SIDE AS LEVER. SET LENGTH OF VERTICAL LINK TO 8.63". CHECK RIDE HEIGHT, AIR SPRING (ITEM 1) MUST BE 7" TALL.
- △ - 5'±1' AT RIDE HEIGHT - 6'±1' FULLY DUMPED.
- Ⓛ △ - ITEMS 41-43 SHOWN FOR REPLACEMENT REFERENCE.



CUSTOMER SUPPLIED
DRUM (WEBB 66826B)
AND WHEEL NUTS

CARTON OF PARTS 6001034 SUSPENSION ASSEMBLY					No. REQD.	No. REQD.
ITEM No.	PART No.	PART DESCRIPTION				
1	1002B14385G	A/SPG 2B14-385			2	-
2	1120029	BUSHING HALF, URETHANE			-	-
3	1120030	BUSHING, URETHANE 1.31 ID			-	-
4	1120031	BUSHING, URETHANE CNTR HARD			-	-
5	1135579B008	FHSCS 3/8"-16NC x 1-1/2" LG GR8			-	-
6	1140022	HHCS 3/4" 10NC 11" LG GR8			2	-
7	1140060	HHCS 7/8" 14NF 7.5" LG GR8			2	-
8	1140066	HHCS 7/8" 14NF 10.5" LG GR8			2	-
9	1140063	HHCS 7/8" 14NF 5" LG GR8			2	-
10	1143076B105	HHCS 3/4" 10NC 4-1/2" LG			-	-
11	1147570B105	HHCS 3/4" 10NC 7-1/2 LG, GR5			2	-
12	1147698B105	HHCS 3/4" 10NC 3-1/4 LG			-	-
13	1150011	L'NUT 3/4"-16NF GR 2, NYL INSERT			2	-
14	1150052	L'NUT 7/8"-14NF TOP LOCK, GRC			6	-
15	1150555B112	L'NUT 1/2" 13NC NYLON INSERT, GR2			6	-
16	1150709B105	L'NUT 3/4" 10NC OVAL 3/4" HI			4	-
17	1160009	WASHER UHMW .25 X 3.125 X 1.3 (232)			8	-
18	1270563B003	SHOCK ASSY 6" MONROE			2	-
19	1310002	STEER DAMPER			-	-
20	1407750B000	WEAR PAD 2"x 4.5" 2 HOLE			-	-
21	1640101S	AXLE ASSEMBLY HUB PILOT, 65.5" KPI w/STUD			1	-
22	3570004	AXLE STOP, ASSY.			-	2
23	3620025	SMPA 209 16.5" TALL W/BOLTING RAIL			2	-
24	5320005	T'ROD UPPER CONTROL, W/BUSHINGS 209			1	-
25	5320009	T'BEAM LOWER CONTROL, W/BUSHINGS 209			2	-
26	5420012	EQUALIZER, BUSH BEAM ASSY, LH, 209			1	-
27	5420013	EQUALIZER, BUSH BEAM ASSY, RH, 209			1	-
28	5490024	SPACER ASSEMBLY, 209			1	-
29	6300CCAB03	HCK,Vlv,O_Lvr,9,V .31-2.5,			2	-
30	7002135	BUMPER SPACER PLATE,			-	-
31	9090056	SLEEVE, 1.313 O.D. x .937 I.D. x 5.22 LG			-	-
32	9090063	CROSS TUBE			1	-
33	9090064	SLEEVE, 1.313 O.D. X .937 I.D. X 8.82 LG			-	-
34	9090065	SLEEVE, 1.25 OD x .94 ID x 3 L			-	-
35	117558B000	BUSHING CENTER 4.75" x 7" BONDED			-	-
36	1117653B001	BUSHING KIT S'BLK ADJ BAR PIN			-	-
37	1154718B105	L'NUT 7/8" 14NF TOP LOCK			-	-
38	1164718B100	WASHER 7/8" TYPE B NARROW			-	-
39	1287594B000	STUD 7/8" 14NF-2A 6" LG GR5			-	-
40	1747564B001	COM CAP MACH'D 153756C001			-	-
41	6040115	BUSHING SERVICE KIT 209 UPPER T'ROD			-	-
42	6040116	BUSHING SERVICE KIT 209 LOWER T'BEAM			-	-
43	6040117	BUSHING SERVICE KIT 2090003 TOTAL SUSP			-	-
44	1160868B100	WASHER 7/8" A-325 FLAT ZINC PLT			12	-

STEER AXLE TIRE & WHEEL CHART

RECOMMENDED TIRE SIZES	WHEEL* (DIAxWIDxINSET)	WHEEL MATERIAL	OVERALL** WIDTH	TIRE CAPACITY* (LBS)
315/80R22.5	22.5x9.00x6.02	ALUMINUM	94.3	20000 AVAILABLE
	22.5x9.00x4.75	STEEL	94.3	
	22.5x9.00x6.38	STEEL	94.3	
385/65R22.5	22.5x12.25x4.75	AL/STEEL	95.0	19840 AVAILABLE
425/65R22.5	22.5x12.25x4.75	AL/STEEL	95.5	22800 AVAILABLE
	22.5x13.00x5.25	AL/STEEL	94.5	
445/65R22.5	22.5x13.00x5.25	AL/STEEL	95.8	

*CHECK WITH TIRE AND WHEEL MANUFACTURERS FOR MORE INFORMATION.
**BASED ON GOODYEAR TIRE AND ACCURIDE WHEEL DATA.

TORQUE VALUES

ITEM	SIZE	TORQUE	
		(FT-LB)	(N-M)
5	3/8-16 NC	25	34
13	3/4-16 NF	50	68
14	7/8-14 NF	500	678
15	1/2-13 NC	25	34
16	3/4-10 NC	160	217
37	7/8-14 NF	350	475

05, 14 WAS 1150028, ADD SERVICE	9/26/11	AAS	MDJ	MSK
EMS 41-43, ADD ITEM 44				
RE AFTER SERVER LOSS	6/01/11	AAS	MDJ	M.J.
IN OF BRAKE CHAMBERS (PER ECR G056)	2-24-11	G.H.	MDJ	BM
CUSTOMER SUPPLIED DRUM" NOTE	11-3-10	DK	MDK	DK
REVISION DESCRIPTION	DATE	BY	CHK	APPD

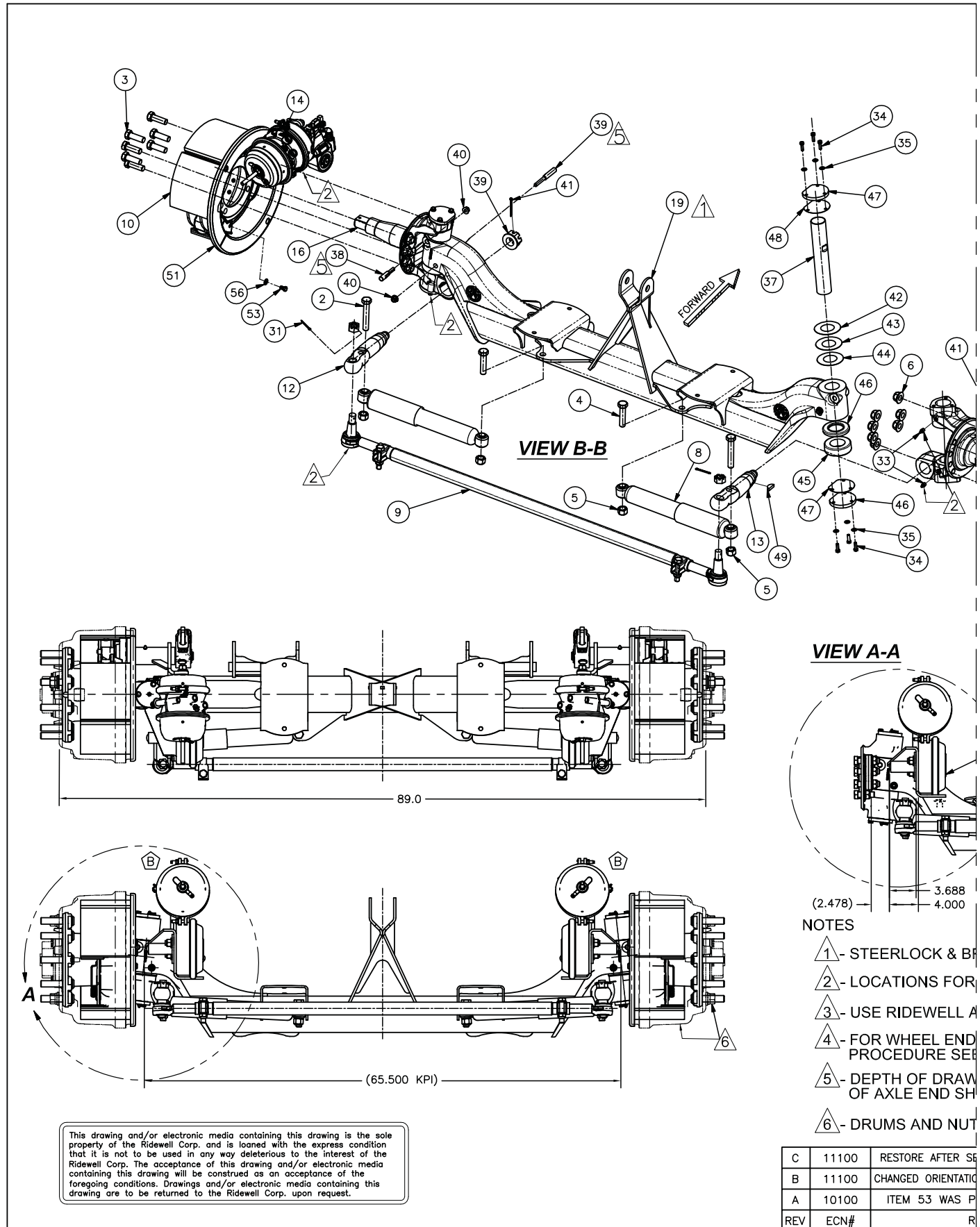
DRAWN BY: G.H.	09/01/10
CHECKED: MDJ	9/20/10
APPROVED: DK	9/20/10
PROJECT NO: 10100	SCALE: B-SIZE: NTS D-SIZE: NTS
MATERIAL: SEE BOM	WEIGHT: -
TOLERANCES UNLESS OTHERWISE SPECIFIED: DECIMAL: .XX ±0.1 FRACTION: 1/16 ±1/16 XX ±0.06 ANG: ±1° XXX ±0.030 [XXX] KDC *WELD TOLERANCES PER ISO W045-02	



RIDEWELL CORPORATION
PO BOX 4586 SPRINGFIELD, MISSOURI 65808

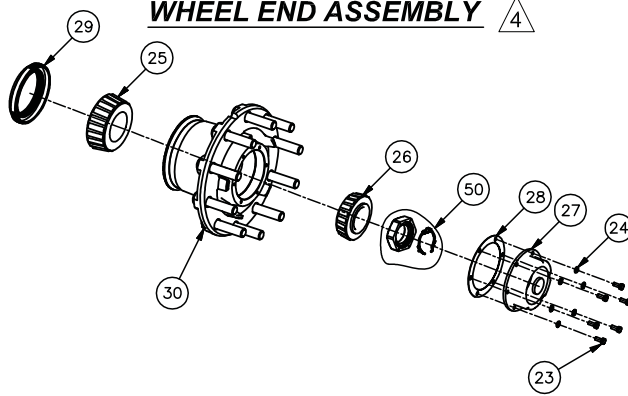
TITLE: RDS-209 60/40-52-11 BOLT-ON
W/BENDIX 16.5X7.0 BRAKE AXLE
46,000 Lb CAPACITY - CCC #094-0410

SHEET 1 OF 1	PART NO: 2090003	REV: D
--------------	------------------	--------



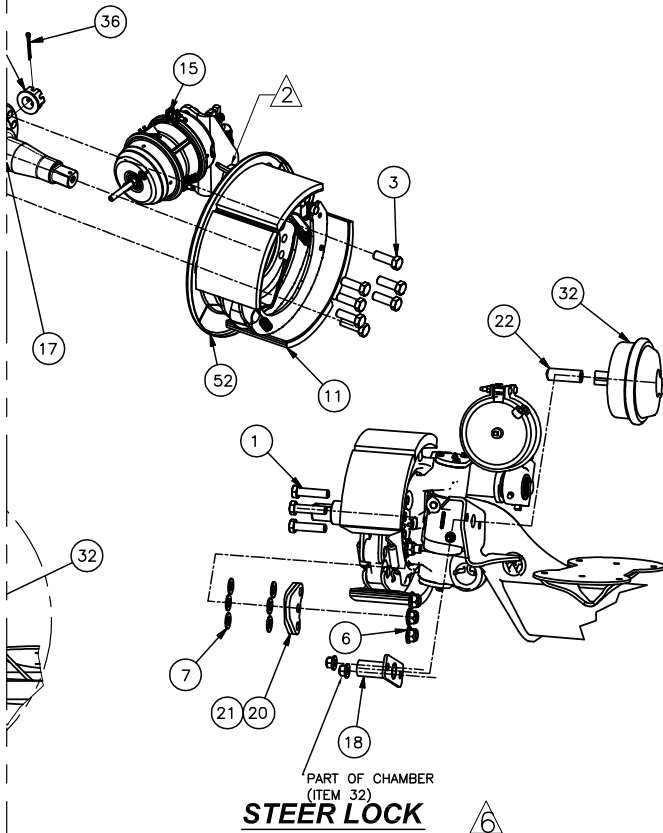
**WHEEL END ASSEMBLY**

4

**PARTS LIST**

ITEM	PART NO.	DESCRIPTION	QTY
1	1140059	HHCS 3/4" 16NF 3" LG	6
2	1143076B105	HHCS 3/4" 10NC 4-1/2" LG	2
3	1140057	HHCS 3/4" 16NF 2" LG	8
4	1147698B105	HHCS 3/4" 10NC 3-1/4" LG	2
5	1150709B105	L'NUT 3/4" 10NC OVAL 3/4" HI	4
6	1150016	L'NUT 3/4" 16NF FL-TL	14
7	1160576B100	WASHER 3/4" SAE FLAT	12
8	1310002	DAMPER (GABRIEL 665937)	2
9	1660183	TIE ROD ASSY. 20K	1
10	1667726B020	BRAKE ASSY LH 16.5X7 BNDX ES-165-07D	1
11	1667726B021	BRAKE ASSY RH 16.5X7 BNDX ES-165-07D	1
12	1740020	TIE ROD ARM LH W-PORT/FL (232-20K)	1
13	1740021	TIE ROD ARM RH W-PORT/FL (232-20K)	1
14	1667726B025	BRAKE CHAMBER, D-P LH 2424	1
15	1667726B026	BRAKE CHAMBER, D-P RH 2424	1
16	1660281	KNUCKLE LH W/PORT W/ABS (FL-943 SER.)	1
17	1660282	KNUCKLE RH W/PORT W/ABS (FL-943 SER.)	1
18	4660052	STEER LOCK TUBE ASSY.	2
19	5640045S	FAB AXLE, 65.5" KPI RDS-209	1
20	5340025	STOP PLATE ASSY LH (STEER LOCK) 232-20K	1
21	5340026	STOP PLATE ASSY RH (STEER LOCK) 232-20K	1
22	9290015	PLUNGER, STEER LOCK	2
23	1144206B105	HHCS 5/16" 18NC 3/4" LG.	12
24	1164263B100	L'WASHER 5/16" MED.	12
25	1667726B004	BEARING ASSY. #K6461A INNER FL	2
26	1667726B005	BEARING ASSY. #K555S FL OUTER	2
27	1667537B005	HUB CAP 20K 5.5BC	2
28	1667537B006	GASKET H/C 5.5" B.C.	2
29	1667726B006	BEARING SEAL ASSY INNER FL	2
30	1667726B022	HUB ASSY STL #25301--T H/P FL	2
31	1130004	COTTER PIN 9/64"x1-3/4	2
32	1660090	BRAKE CHAMBER, TYPE 30L	2
33	1660134	FITTING GREASE 1/8" NPTF	4
34	1140064	HHCS 5/16-18 3/4" LG Gr8 PHOS & OIL	12
35	1160004	WASHER FLAT .34 x .62 x .06	12
36	1137409B002	COTTER PIN 3/16 x 2-1/4	2
37	1660221	KING PIN FL-943 SERIES (WESTPORT)	2
38	1660216	LOCK PIN .44/20 3.18"	2
39	1660217	LOCK PIN .44/20 4.75"	2
40	1150001	L'NUT 7/16" 16NF FLANGED	4
41	1660190	NUT 1-1/4 12UNF CASTLE FLANGED	2
42	1660218	SHIM - KING PIN .005 Thk FL-943 SERIES	2
43	1660219	SHIM - KING PIN .015 Thk FL-943 SERIES	2
44	1660220	SHIM - KING PIN .030 Thk FL-943 SERIES	2
45	1660224	BEARING ASSY T-208 FL-943 SERIES	2
46	1660225	SEAL T-208 KING PIN BEARING	2
47	1660222	KING PIN END CAP W-P 20K	4
48	1660223	GASKET KING PIN END CAP W-P 20K	4
49	1137409B003	WOODRUFF KEY #25	2
50	1660188	SPINDLE NUT KIT PRO-TORQ	2
51	1667726B023	DUST COVER LH BENDIX 16.5 x 7	1
52	1667726B024	DUST COVER RH BENDIX 16.5 x 7	1
53	1147376B105	HHCS 3/8" 16NC 5/8" LG.	8
54	1664702B010	ABS SENSOR #300151	2
55	1664702B002	ABS SENSOR CLIP #899 759 8154	2
56	1160015	WASHER 3/8" FLAT SAE ZINC	8

WHEEL END ASSEMBLY

**STEER LOCK**

6

RACKET NOT SHOWN IN VIEW B-B

GREASE (TYP)

AXLE ASSEMBLY PROCEDURE 9710005

BEARING AND SEAL ASSEMBLY
DRAWING NO. 9710011KEY (ITEM 38 & 39) BELOW THE FACE
COULD BE .125" MAX.

S ARE CUSTOMER PROVIDED

DRIVER LOSS; ITEM 55 WAS 1664702B007	5/17/11	G.H.	MDJ	MK
IN OF BRAKE CHAMBERS (PER ECR G056)	2/24/11	G.H.	BM	MDJ
IN 1137511B005, ADDED ITEM 56	10/06/10	G.H.	MDJ	DK
VISION DESCRIPTION	DATE	BY	CHK	APPD

DRAWN BY:	GH	7/30/10
CHECKED:	MDJ	9/17/10
APPROVED:	DK	9/20/10
PROJECT NO:	10100	SCALE: B-SIZE: N/A D-SIZE: N/A
MATERIAL:	SEE BOM	WEIGHT: -
TOLERANCES UNLESS OTHERWISE SPECIFIED: DECIMAL: .XX ±0.06 ANG: X ±1° XXX ±0.030 XXX KCC *WELD TOLERANCES PER ISO W045-02		

**RIDEWELL CORPORATION**
PO BOX 4586 SPRINGFIELD, MISSOURI 65808TITLE: AXLE 20K 5" FAB DROP W/SL
RDS-209 CRANE CARRIER
65.5 KPI W/BENDIX 16.5 x 7.0 BRAKE

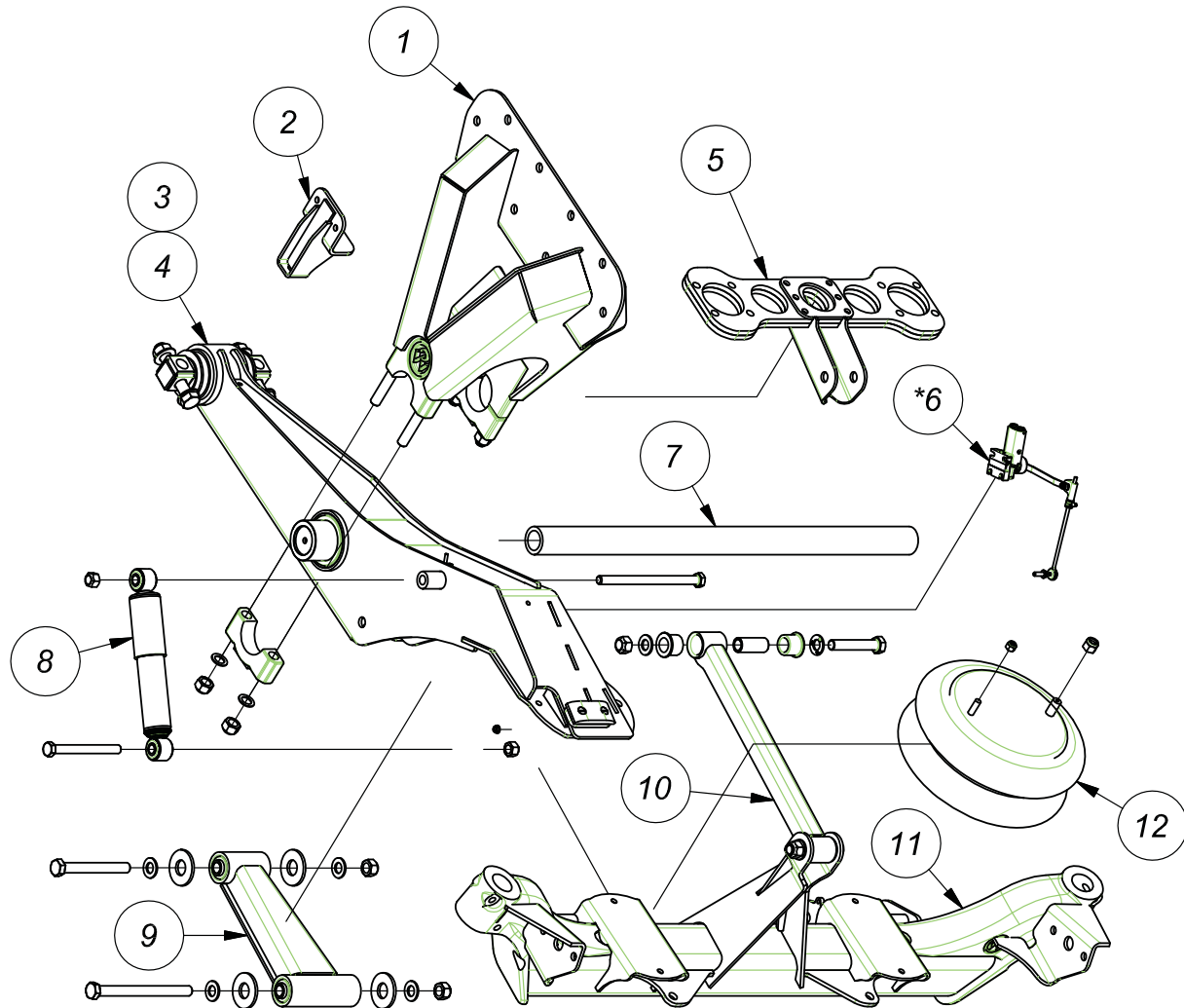
SHEET 1 OF 1

PART NO:

1640101S

REV:

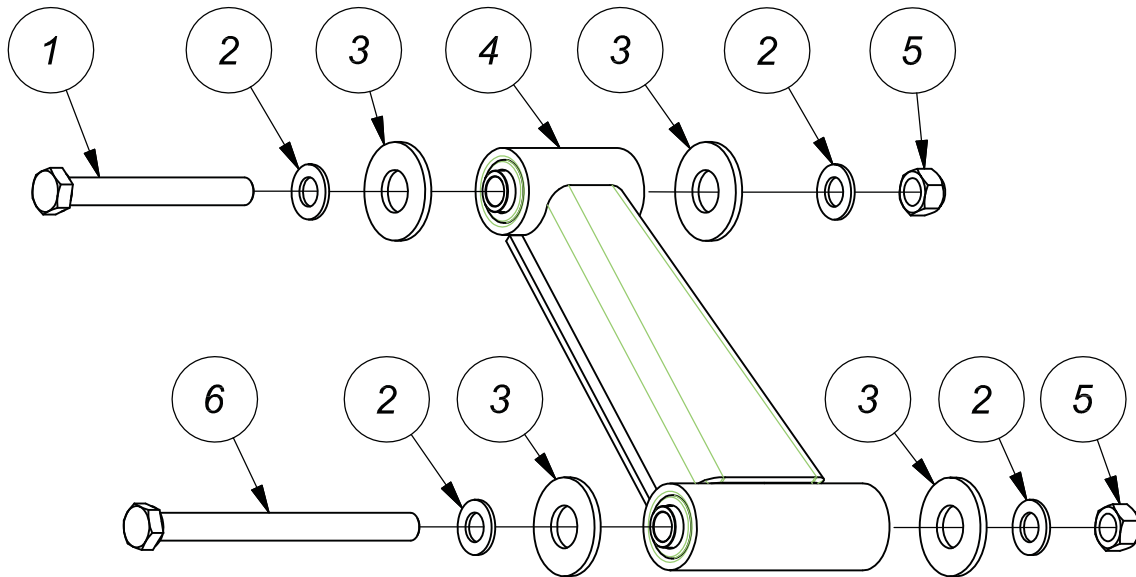
C



2090003 MAIN PARTS LIST

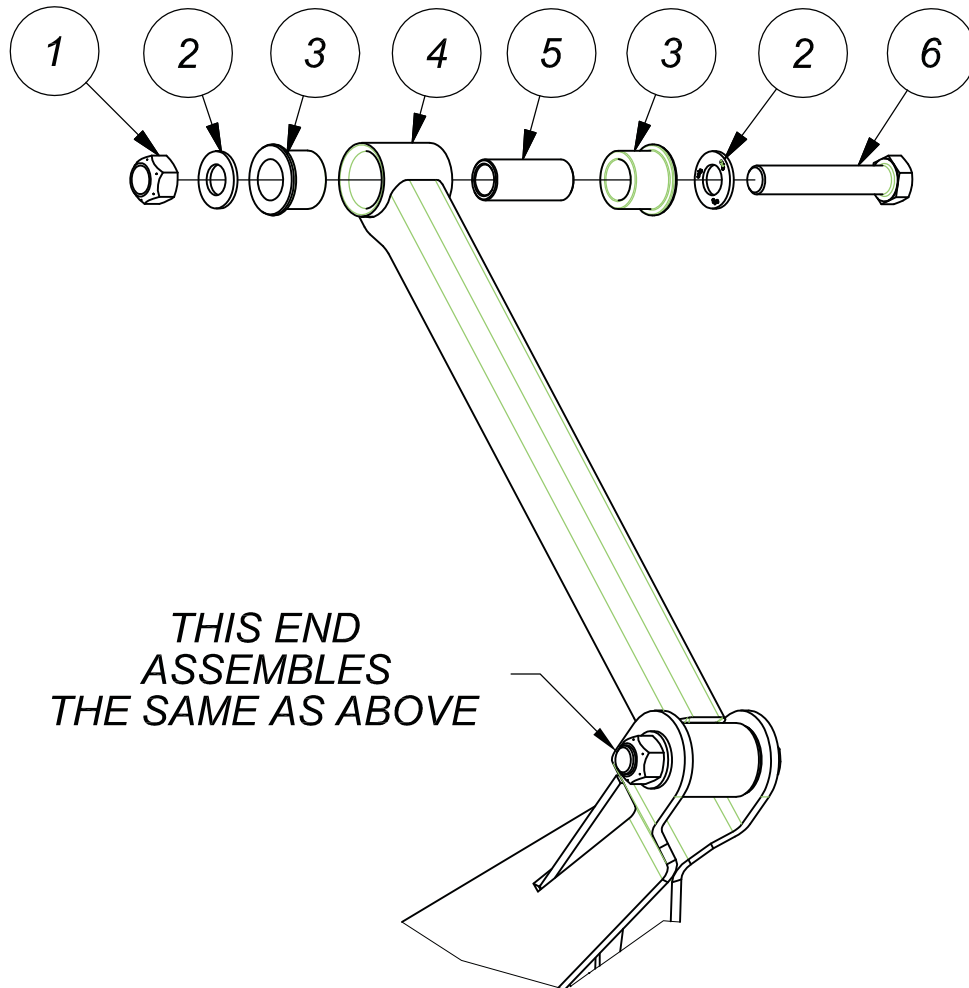
ITEM	PART NO.	DESCRIPTION	QTY
1	3620025	SMPA 209 16.5" TALL	2
2	3570004	STOP, ASSEMBLY, 209 AXLE	2
3	5420012	EQUALIZER, BUSH BEAM ASSY, LH	1
4	5420013	EQUALIZER, BUSH BEAM ASSY, RH	1
5	5490024	SPACER, UCA BRACKET ASSEMBLY	1
*6	6300CCAB03	HCK, Vlv, 0_Lvr, 9.V .31-2.5	2
7	9090063	CROSS TUBE, 209	1
8	1270563B003	SHOCK ASSY 6"	2
*9	5320009	T'BEAM ASSY. LOWER W/BUSHINGS	2
*10	5320005	T'ROD, UPPER CONTROL ARM	1
11	1640101S	AXLE ASSEMBLY 65.5" KPI HUB PILOT	1
12	1002B14385G	A/SPG 2B14-385	2

ITEM NUMBERS WITH AN * ARE DETAILED ON ADDITIONAL PAGES

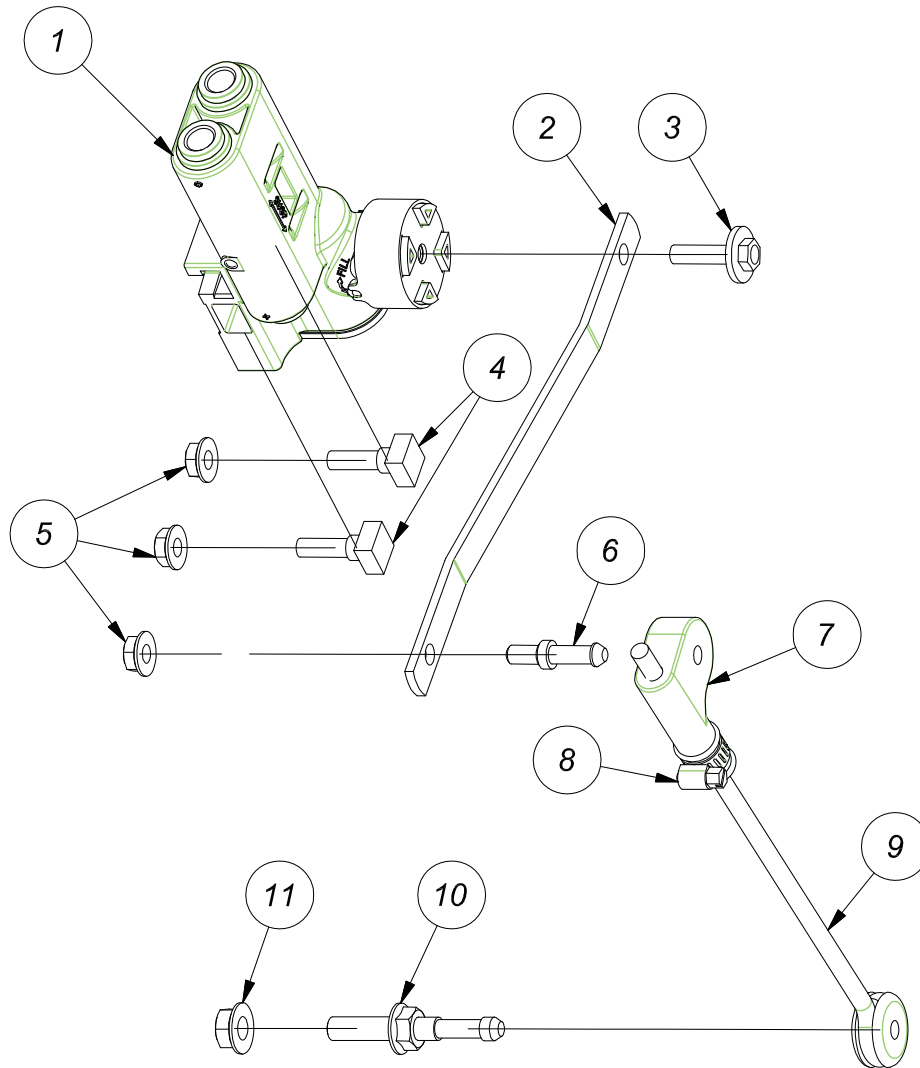


LOWER CONTROL ARM AND HARDWARE PARTS LIST

ITEM	PART NO.	DESCRIPTION	QTY
1	1140060	HHCS 7/8" 14NF 7.5"LG.	1
2	1160868B100	WASHER 7/8" A-325 FLAT	4
3	1160009	WASHER UHMW .25 X 3.125 X 1.3	4
4	5320009	T'BEAM ASSY. LOWER W/BUSHINGS	1
5	1150052	L'NUT 7/8" 14NF TOP LOCK	2
6	1140066	HHCS 7/8" 14NF 10.5"LG	1



UPPER CONTROL ARM AND HARDWARE PARTS LIST			
ITEM	PART NO.	DESCRIPTION	QTY
1	1150052	L'NUT 7/8" 14NF TOP LOCK	1
2	1160868B100	WASHER 7/8" A-325 FLAT	2
3	1120029	BUSHING HALF, URETHANE	2
4	5030026	T'ROD, UPPER CONTROL ARM	1
5	9090065	SLEEVE, 1.25" OD X .94" ID X 3"LG	1
6	1140063	HHCS 7/8" 14NF 5"LG	1



LEVELING VALVE PARTS LIST			
ITEM	PART NO.	DESCRIPTION	QTY
1	6205004	HCV RW STANDARD	1
2	6212002	LEVER, HCVO6, 6-15/16"	1
3	1130021	SCREW W/WASHER, LEVER	1
4	1130020	T-BOLT 1/4" HCV06 MTG	2
5	1157740B101	L'NUT 1/4-20 WHIZ-LOC	3
6	1237740B001	CONNECTOR PIN, 1/4"	1
7	1235555B001	P-DAMPNER/CONNECTOR	1
8	1236478B000	CLAMP 3/16"-5/16" HOSE	1
9	1237423B049	V LINK SINGLE EYE 9"	1
10	1237423B003	LOWER STR CONN 5/16"	1
11	1150023	L'NUT 5/16" 18NC FL ZINC	1

LEFT HAND (DRIVERS SIDE) CONFIGURATION SHOWN RIGHT HAND SIDE
CONFIGURATION IS MIRRORED

*** SEE FIGURE PAGE #4 FOR CAP NOTCH ALIGNMENTS ***

Warranty

The Ridewell Corporation warrants the suspension systems manufactured by it to be free from defects in material and workmanship, under proper use, installation, application, and maintenance for a period of 3 years after delivery to the original purchaser. The responsibility of the Ridewell Corporation under this non-transferable warranty is limited to making good at the company factory by repair or replacement of any part or parts which it manufactures.

Written permission for any claim return must be first obtained from authorized Ridewell personnel. All returns must have transportation charges prepaid by the customer and accompanied with a complete written explanation of claimed defects and the circumstances of operational failure. On all component parts not manufactured by Ridewell their warranty is to the extent that the manufacturer of such parts warrant them to Ridewell Corporation. This is the only authorized Ridewell warranty and is in lieu of all other expressed or implied warranties or representations, including any implied warranties of merchantability or fitness, or of any obligations on the part of Ridewell Corporation. In no event will Ridewell be liable for business interruptions, loss of profits, personal injury, cost of delay, or for any other special, indirect, incidental or consequential losses, costs or damages.

Subject to all of the above conditions, if repair or replacement of any defective part is made by Ridewell Corporation, Ridewell will return the repaired or replaced part to the original purchaser with transportation charges prepaid.

1 - 12 months - 100% parts & labor
13 - 36 months - 100% parts only



The Engineered Suspension Company