

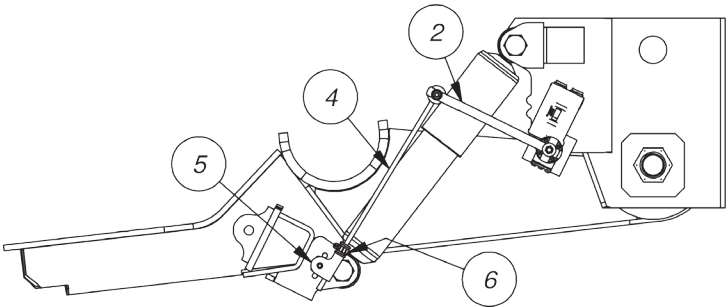
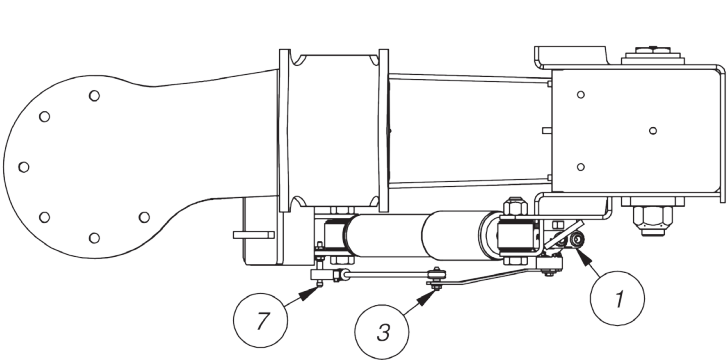
Height Control Kit (HCK) Trailer Installations

| No | Description | No | Description |
|----|----------------------|----|------------------------|
| 1 | Height Control Valve | 6 | Clamp |
| 2 | Lever Arm | 7 | Lower Pin Assembly |
| 3 | Upper Pin Assembly | 8 | Lower Mounting Bracket |
| 4 | Vertical Link | 9 | Upper Mounting Bracket |
| 5 | "P" Connector | | |

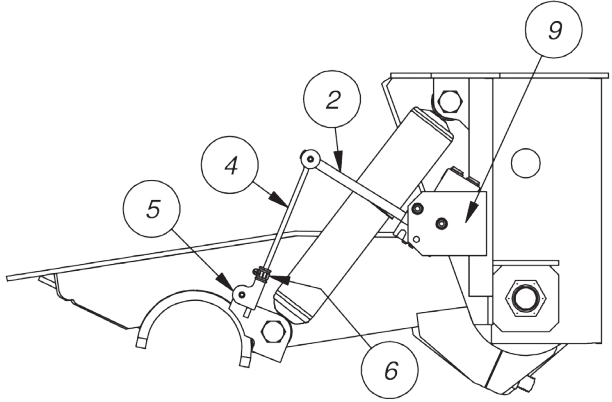
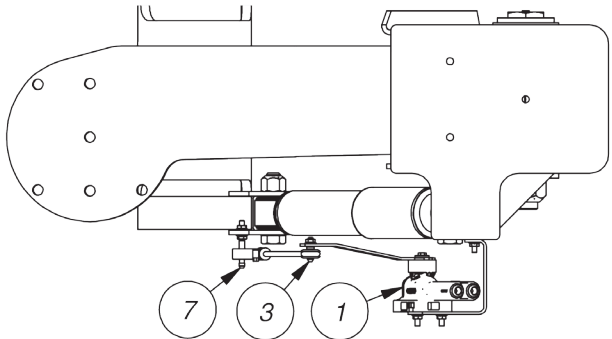
- Operational Check**
Raise the suspension by manually rotating the lever arm 20-30 degrees towards the "FILL" position. Hold lever in place until air springs inflate. If air springs do not inflate:
- Verify air supply pressure is sufficient to open the pressure protection valve (usually greater than 70 psi).
 - Check to make sure that any suspension dump/exhaust feature is not activated.
 - Check to make sure lever is oriented properly. The drive bearing cap may need to be rotated 180 degrees and the lever re-positioned.

If air springs are inflating properly, manually rotate the lever arm 20-30 degrees towards the "EXH" (Exhaust) position. Hold lever in place and check that air is escaping from the exhaust port.

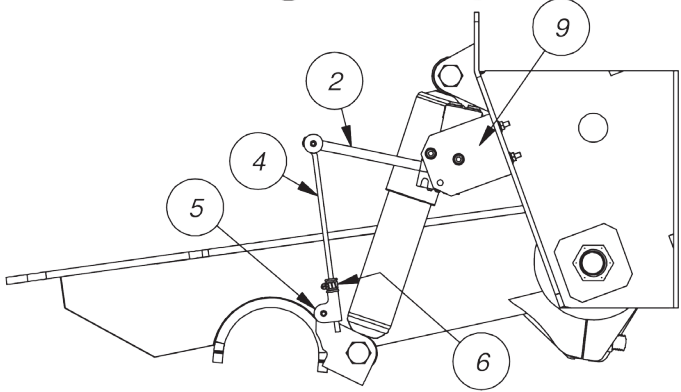
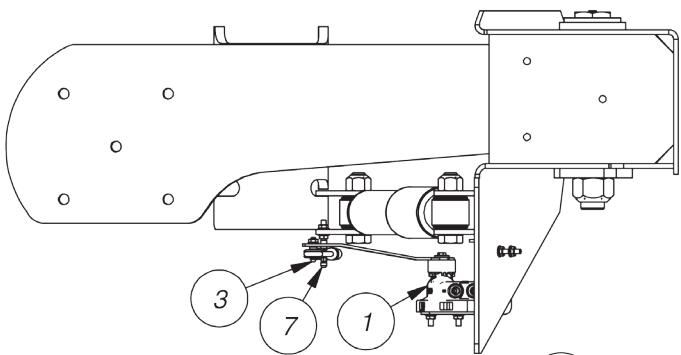
The installer is responsible for making sure that the air system requirements comply with Federal Motor Vehicle Safety Standards (FMVSS) 121 for Air Brake Systems.



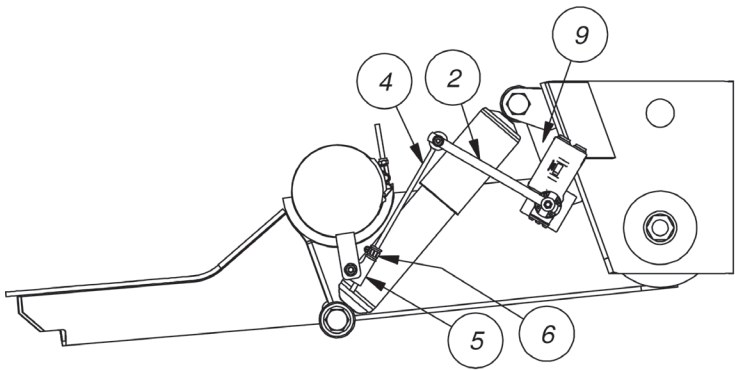
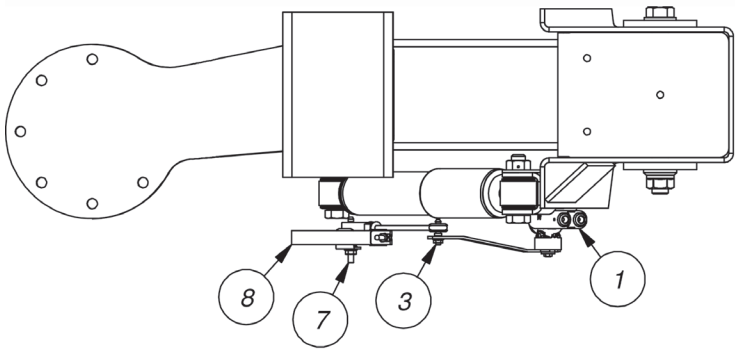
RAR-240 15K; 25K; 30K - Underslung
RAR-243 25K Underslung



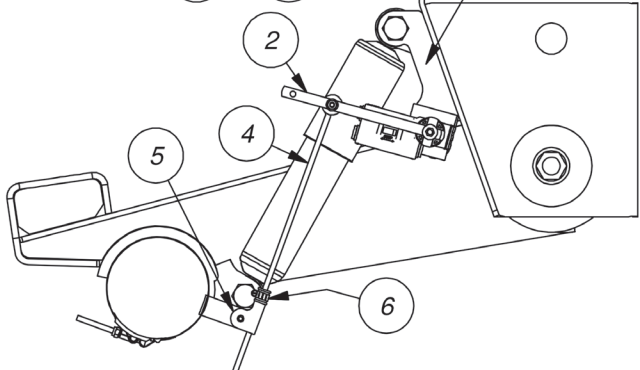
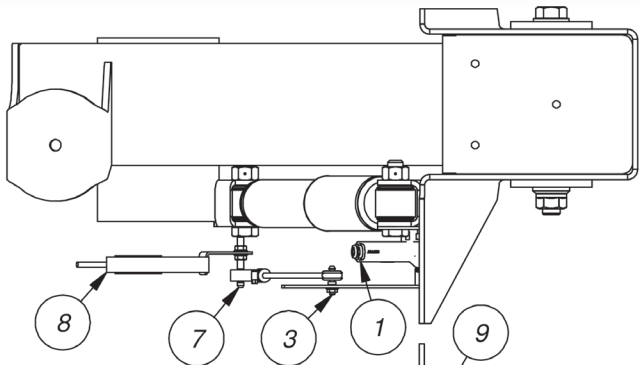
RAR-240 25K - Overslung



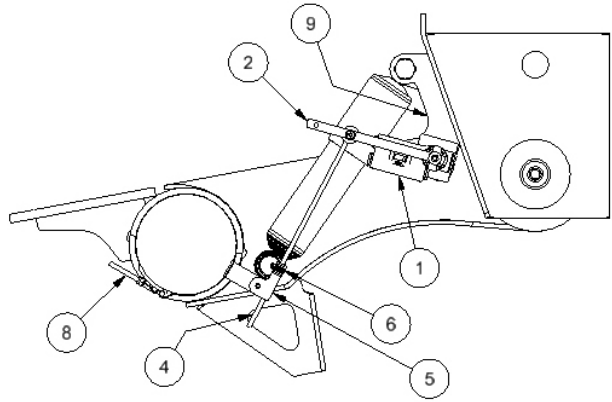
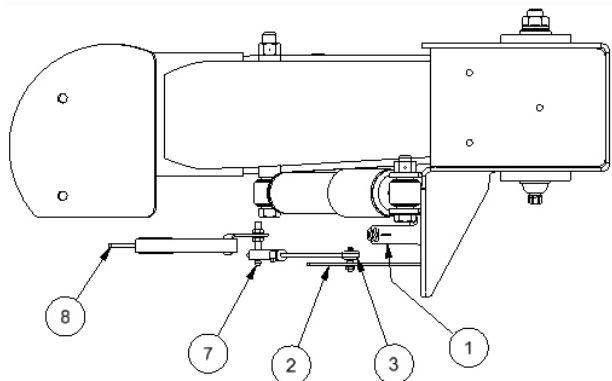
RAR-240 30K - Overslung



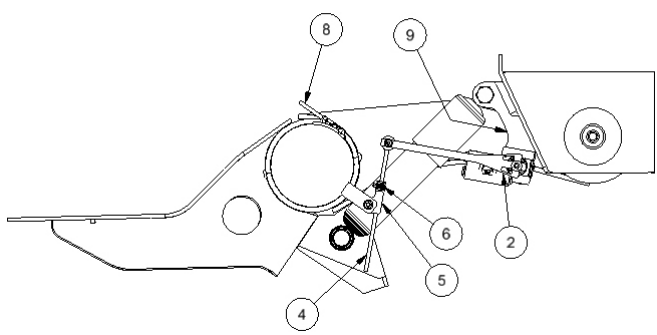
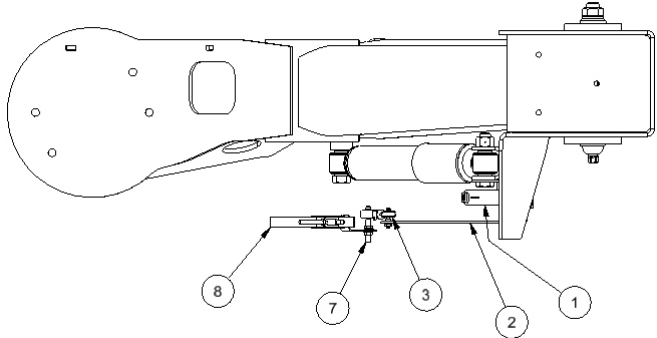
RAR-260 25K; 30K - Underslung



RAR-260 25K; 30K - Overslung

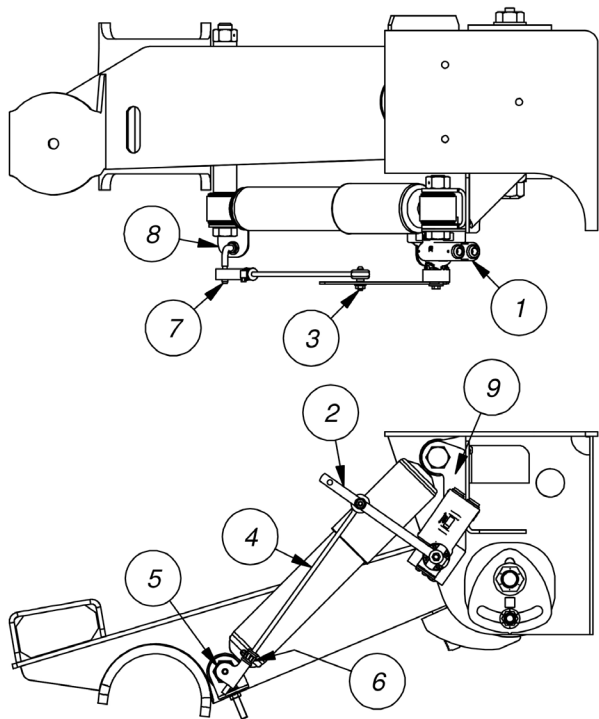


RAR-266 23K; 25K - Overslung

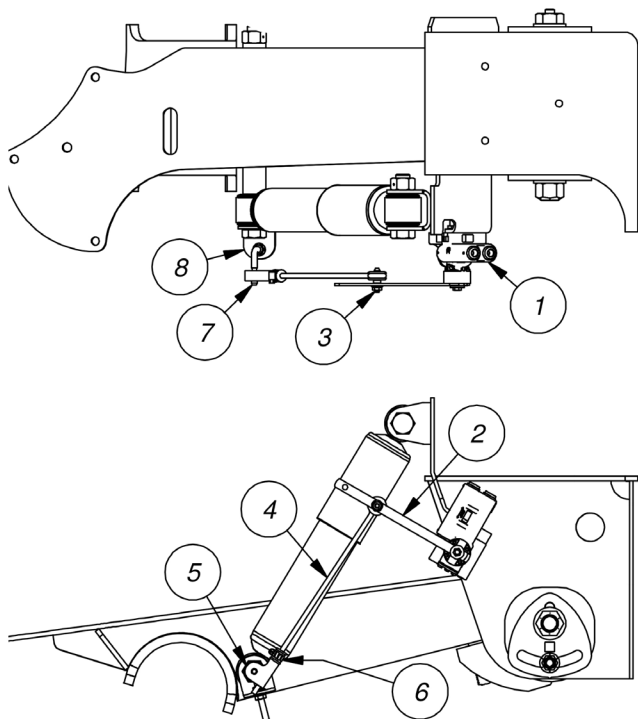


RAR-266 25K - Low-Mount

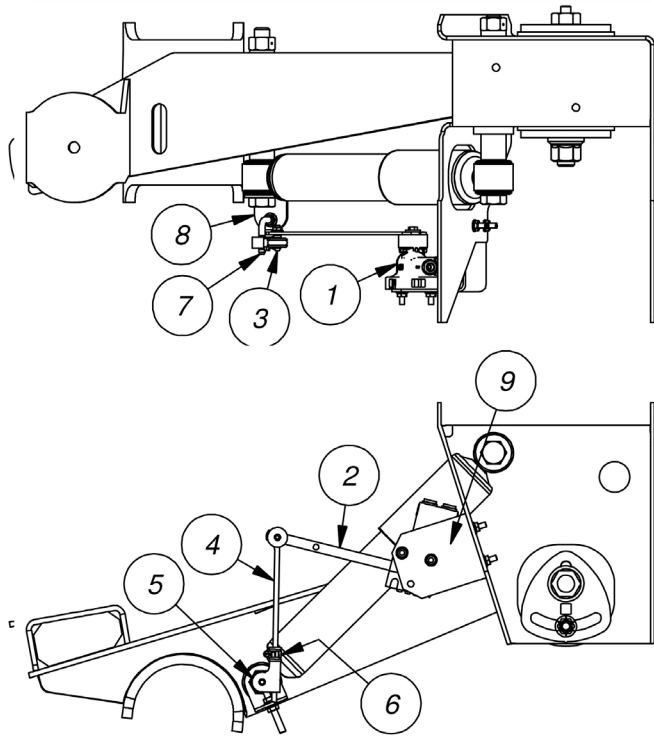
| No | Description | No | Description | No | Description |
|----|----------------------|----|---------------|----|------------------------|
| 1 | Height Control Valve | 4 | Vertical Link | 7 | Lower Pin Assembly |
| 2 | Lever | 5 | "P" Connector | 8 | Lower Mounting Bracket |
| 3 | Upper Pin Assembly | 6 | Clamp | 9 | Upper Mounting Bracket |



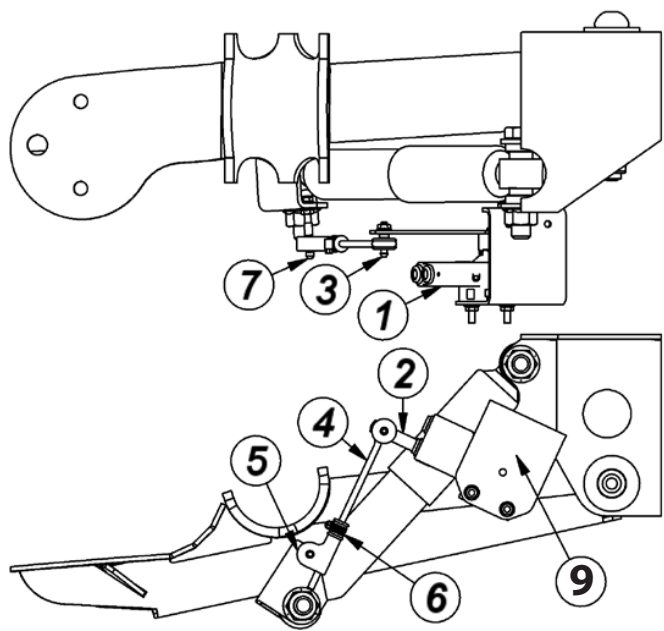
RAR-200 25K; 30K - Ridelite
(Standard and High Travel)



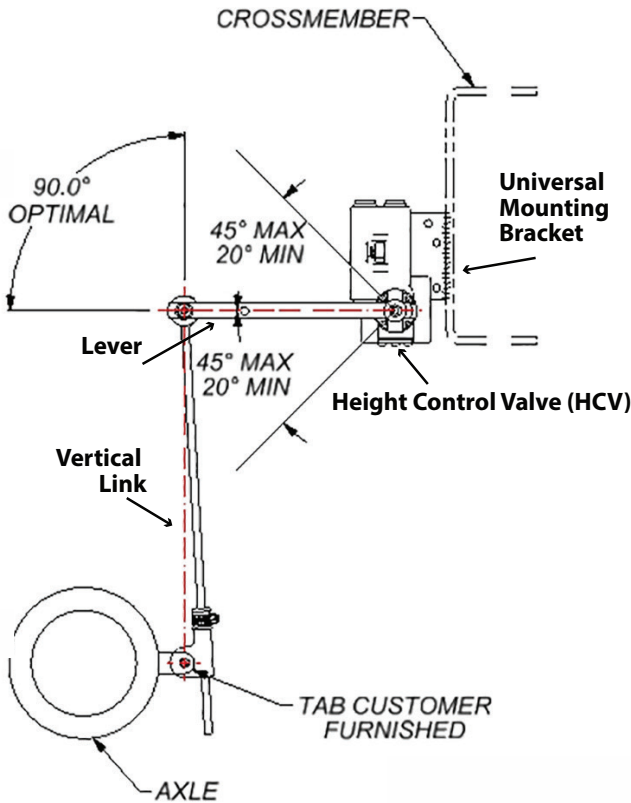
RAR-200 25K - Ridelite
(Low Mount 12")



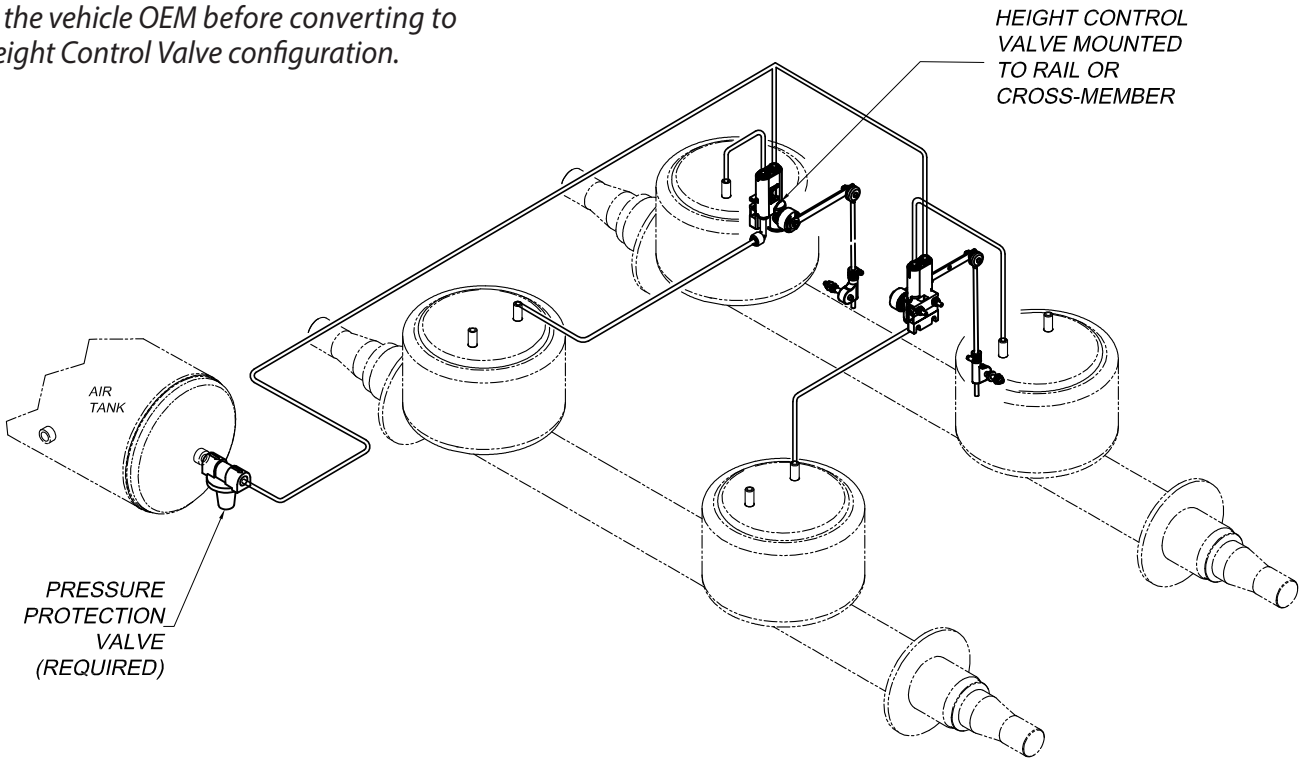
RAR-200 23K - Narrow Top



RAR-244 8K - (Use with Lo-Flo HCV)



Consult the vehicle OEM before converting to Dual-Height Control Valve configuration.



HCV-to-lever angles between 20- and 45-degrees provide full jounce and rebound travel.

Example of Height Control Valve (HCV) installation on vehicle frame with linkage attached to the axle.

Warranty
The Ridewell Corporation warrants the Automatic Height and Leveling Air Control Valve manufactured by it to be free from defects in material and workmanship for a period of 1 year from the date code molded into the body.
Warranty coverage is limited to the repair/replacement of valve parts. Coverage applies only to valves that have been properly installed, maintained and operated. No warranty applies to air lines, fittings, mounting hardware, actuating arm, linkage, or axle attachments.
Ridewell reserves the right to require any valve to be returned for inspection before claim is obtained. All returns must have transportation charges prepaid by the customer and accompanied with a complete written explanation of claimed defects and the circumstances of operational failure.
This non-transferable warranty is in lieu of all other expressed or implied warranties or representations, including any implied warranties of merchantability or fitness or any obligations on the part of Ridewell.
Ridewell will not be liable for any business interruptions, loss of profits, personal injury, any costs of travel delays or for any other special, indirect, incidental or consequential losses, costs or damages caused by Ridewell.