

Bushing Assembly and Replacement Instructions:

- RSS-233 – Truck Standard/Wide Frame (20K Capacity)
- RSS-233T – Trailer Standard Frame (20K Capacity)

RSS-233 20K Truck – Bushing Replacement Kit

Suspension Type	Bushing Kit Part No.	Pivot Hardware	Foot-pound / Newton-meter	
All models	6040142	Bushing kit-w/o hardware	500 ft-lb	678 N-m
All models	6040145	Pivot Bolt (HHCS) Pivot Nut (Lock Nut)	500 ft-lb	678 N-m

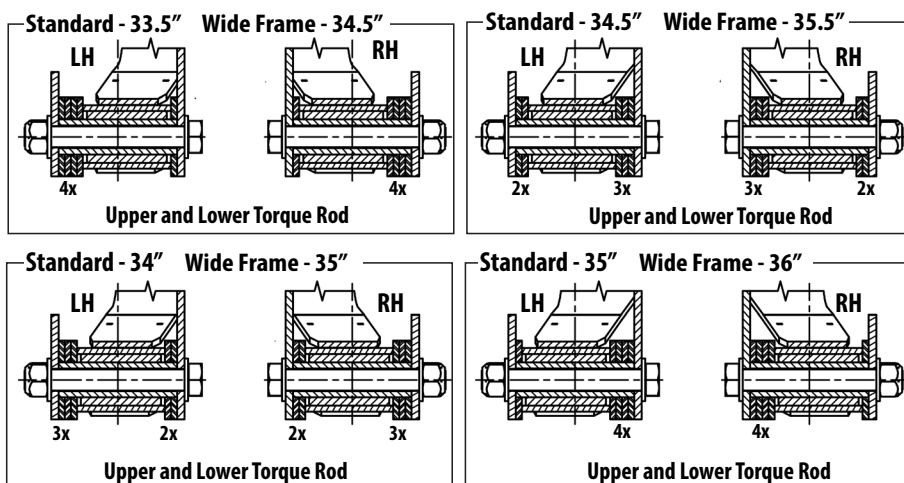
CAUTION Failure to install and maintain fasteners at torque specifications could result in suspension failure and void the warranty.

Bushing Replacement Procedure – Standard/Wide Frame Width

Park the vehicle on a level surface. Chock wheels to keep vehicle from moving. Exhaust all air from the air system. Disassemble suspension, if necessary, to reach pivot connections. **CAUTION** Failure to properly chock wheels and exhaust the air system could allow vehicle movement that could result in serious injury.

- Count the number of wear washers on each side of the bushing on the Axle-End Torque Rod Assembly. The wear washer number varies according to the frame width set by the hangers (Figure 1).
- Remove the pivot hardware and discard. Inspect the wear washers for excessive wear/damage. Replace, if necessary.
NOTE: Pivot hardware included with bushing replacement kit.
- Remove bushing assembly from torque rod and discard. Clean the rod eye of any foreign debris/corrosion.
- Apply Energy Suspensions® Formula 5 Prelube to the bore (inside) of new bushings.
NOTE: Do not substitute - special urethane bushing lubricant included with all bushing kits.
- Install new bushing into the eye of the torque rod.
NOTE: Mallet /press may be needed to install the bushing.
- Hanger-End Torque Rod - Bushing Inner Sleeve - 4.1" Press inner sleeve into the installed bushing. Center the sleeve so that both ends extend slightly past the sides of the bushing. Assemble the pivot connection with one wear washer on each side of the bushing. Inner sleeve must be flush with or extend slightly past the outside of the wear washers on both ends.
- Axle-End Torque Rod - Bushing Inner Sleeve - 4.8" Press inner sleeve into the installed bushing. Position the sleeve so that one end extends further past the bushing than the other end (Figure 1). Assemble pivot connection with appropriate number of wear washers on either end of the inner sleeve. Inner sleeve must be flush with or slightly past the outside of the wear washers on both ends.
- Torque pivot nut to specifications (500 ft-lb - 678 N-m).
- Reassemble suspension, if necessary. Torque components to specifications.
- Check wheel toe-in setting (between 1/32" and 3/32") and adjust, if necessary.

RSS-233 20K Truck Suspension - Standard/Wide Frame Width Axle-End Torque Rod Assembly 4.8" Inner Sleeve - Wear Washer Installation



RIDEWELL
SUSPENSIONS
Part No.: 9710020

Figure 1. The number of wear washers on each side of the axle-end torque rod assembly will vary according to suspension frame width.

RSS-233T 20K Trailer – Bushing Replacement Kit

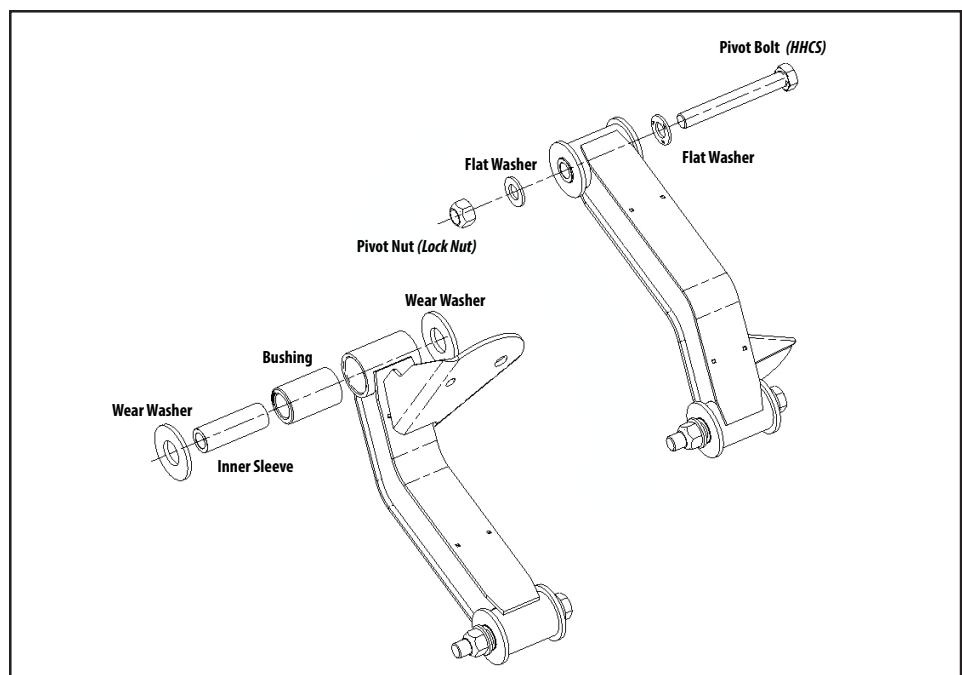
Suspension Type	Bushing Replacement Kit Part Number	Pivot Hardware	Torque Values	
			foot-pound	Newton-meter
All models	6040160	Bushing kit-w/o hardware	500 ft-lb	678 N-m
All models	6040161	Pivot Bolt (HHCS) Pivot Nut (Lock Nut)	500 ft-lb	678 N-m

CAUTION Failure to install and maintain fasteners at torque specifications could result in suspension failure and void the warranty. Refer to the engineering drawing for model-specific torque values.

Bushing Replacement Procedure – Standard Frame Width

Park the vehicle on a level surface. Chock wheels to keep vehicle from moving. Exhaust all the air from the air system. Disassemble suspension, if necessary, to reach the pivot connections. **CAUTION** Failure to properly chock wheels and exhaust the air system could allow vehicle movement that could result in serious injury.

1. Remove pivot hardware and discard. NOTE: New pivot hardware included in bushing replacement kit.
2. Inspect wear washers for excessive wear/damage. Replace, if necessary.
3. Remove bushing assembly from the torque rod and discard. Clean the rod eye of any foreign debris or corrosion.
4. Apply Energy Suspensions® Formula 5 Prelube to the bore (inside) of new bushings. NOTE: Do not substitute - special urethane bushing lubricant included with all bushing kits.
5. Install bushing in the eye of the torque rod. NOTE: Mallet/press may be needed to install new bushing.
6. Press inner sleeve into the installed bushing. Center the sleeve inside the bushing so that both ends extend slightly past the sides of the bushing.
7. Assemble the pivot connection with one wear washer on each side of the bushing (Figure 2). Inner sleeve must be flush with or extend slightly past the outside of the wear washers.
8. Torque pivot nut to specifications (500 ft-lb - 678 N-m).
9. Reassemble suspension, if necessary. Torque components to specifications.
10. Check wheel toe-in setting (between 1/32" and 3/32") and adjust, if necessary.



Notes and Cautions

This instruction uses two types of service notes:

“NOTE”: Provides additional instructions or procedures to complete tasks and make sure that the suspension functions properly.

CAUTION Indicates a hazardous situation or unsafe practice that, if not avoided, could result in equipment damage and serious injury.

Figure 2. The pivot connection on the RSS-233 20K Trailer Suspension is assembled with one wear washer on each side of the bushing.