

RAR-243, RAR-244, & RAR-247

Specialty Trailer Air-Ride Suspensions

Integrated mounting for shock absorbers & height control valve

RAR-243 (Lightweight)

25,000 lb. capacity

Mounting heights from 5½" to 9"

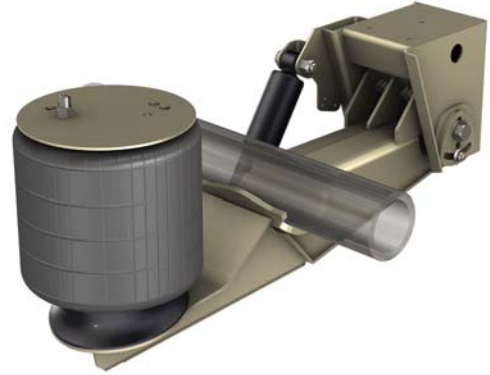
Compatible with RAR-240 air control kits, lift kits, air springs, shocks, & wear components

Non-captured axle

Axle alignment adjustment capability +/- 1/4" at hanger

Patented contoured axle seat

Shear-type pivot bolt



Available in 5½" ride height with 6" pivot height to minimize wheel hop with 17½" tires!

RAR-244 "Featheride" (Light-Duty)

8,000 lb. capacity

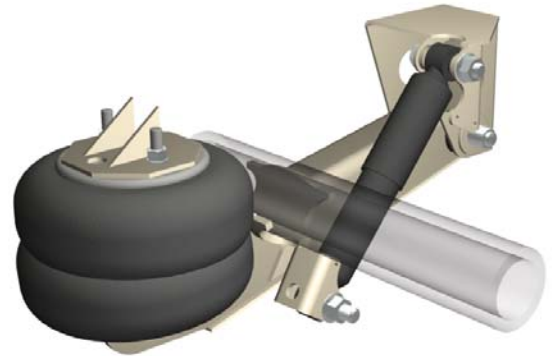
Compact design allows 31" axle spacing

For use with 3½" diameter straight axle or for low ride height, 4" drop axle

Uses standard air springs & shock absorbers

Optional dump valve exhausts air springs & lowers floor height for loading & unloading

Contoured axle seat - no u-bolts required



For horse trailers, race car trailers, & other specialized light duty applications!

RAR-247 (Heavy-Duty Integrated Axle)

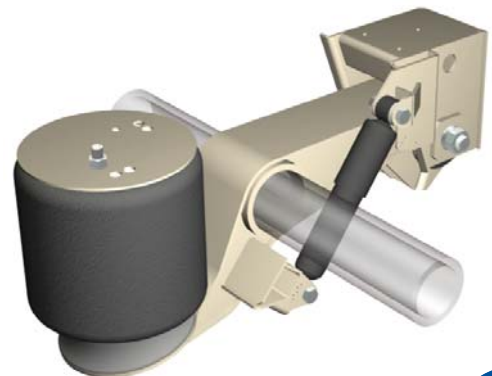
25,000 lb. capacity

Mounting heights 6½" to 9"

Compatible with disc or drum brakes

Available in hanger and yoke mount configurations

Captured axle design



Integrated axle for severe service applications!



Specialty Trailer Air-Ride Suspensions

RAR-243

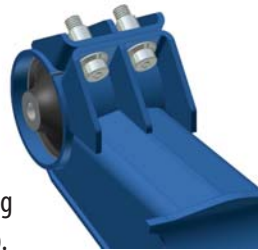


Speed Set Alignment

Makes manual alignment easier than ever (+/- 1/4" at hanger).

Pivot Bushing Clamp

Lockbolted with the Huckbolt® fastening system for consistent, reliable clamp-up.



Tapered Rubber Bushing

Reduces stress on the trailing arm & axle. Double-bonded pivot bushing can be installed or replaced with common shop tools. No hydraulic press required.

RAR-244

Simple, Slotted Alignment Feature

Factory-installed Huckbolt® at pivot eliminates torque requirement. Shoulder washers are welded directly to hanger after alignment.



RAR-247

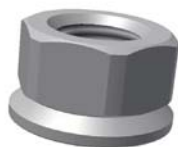
Low Stress Axle Connection



Trailing arm attaches to 1/2" thick sleeve; window welds attach the axle sleeve to the axle and eliminate weld termination stresses. The "wrap-around" beam structure minimizes bending and torsion stresses.

Rubber Bushing

Solid, monopivot bushing is clamped into the beam for easy maintenance, providing superior lateral stability.



Securelok™ Pivot Nut

Helps maintain pivot clamping force. This unitized nut, washer, & shim combination is highly resistant to vibration.